

BF210

Device

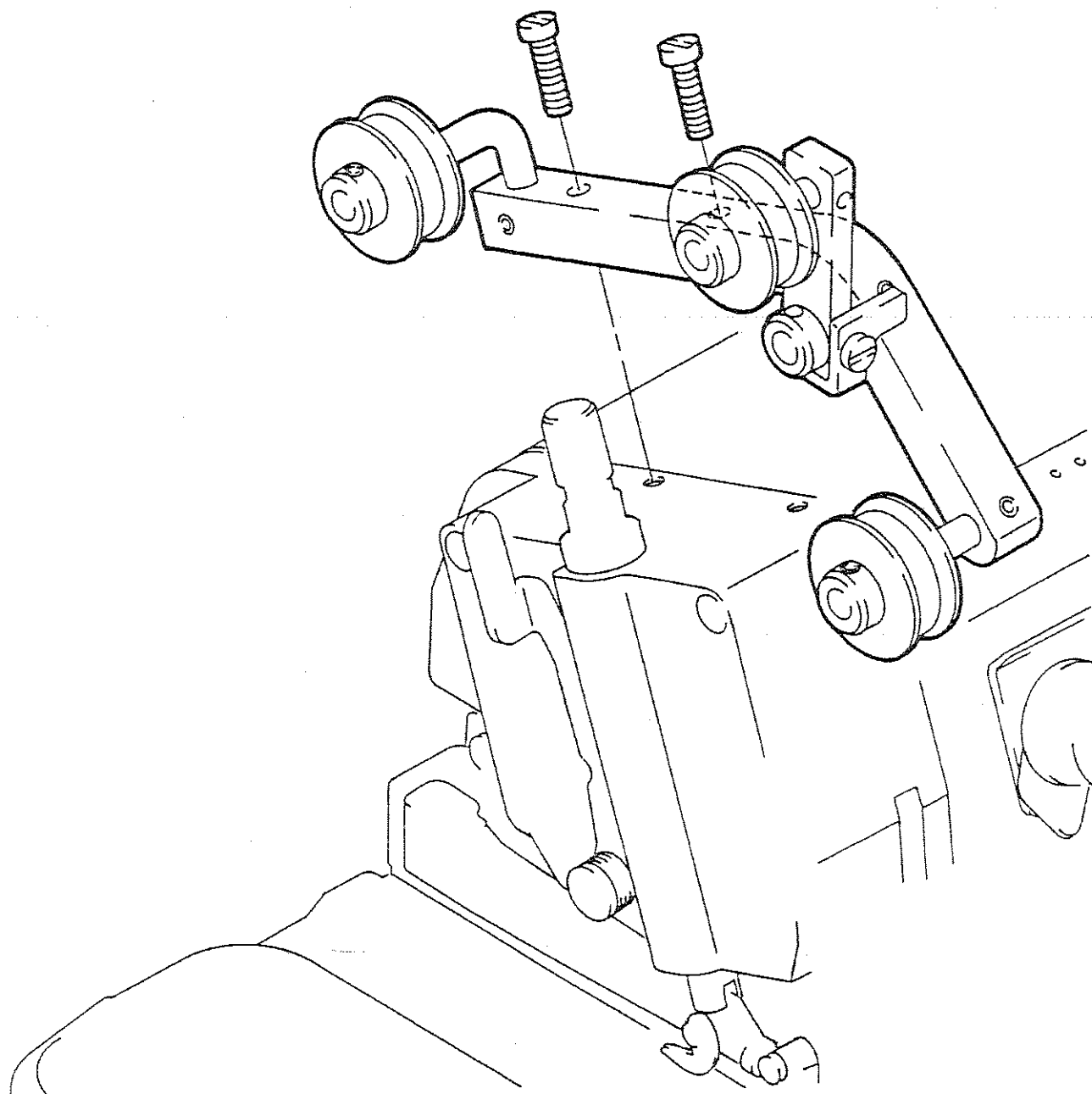
取付使用説明書
INSTRUCTIONS



PEGASUS®

Installing the roller assembly

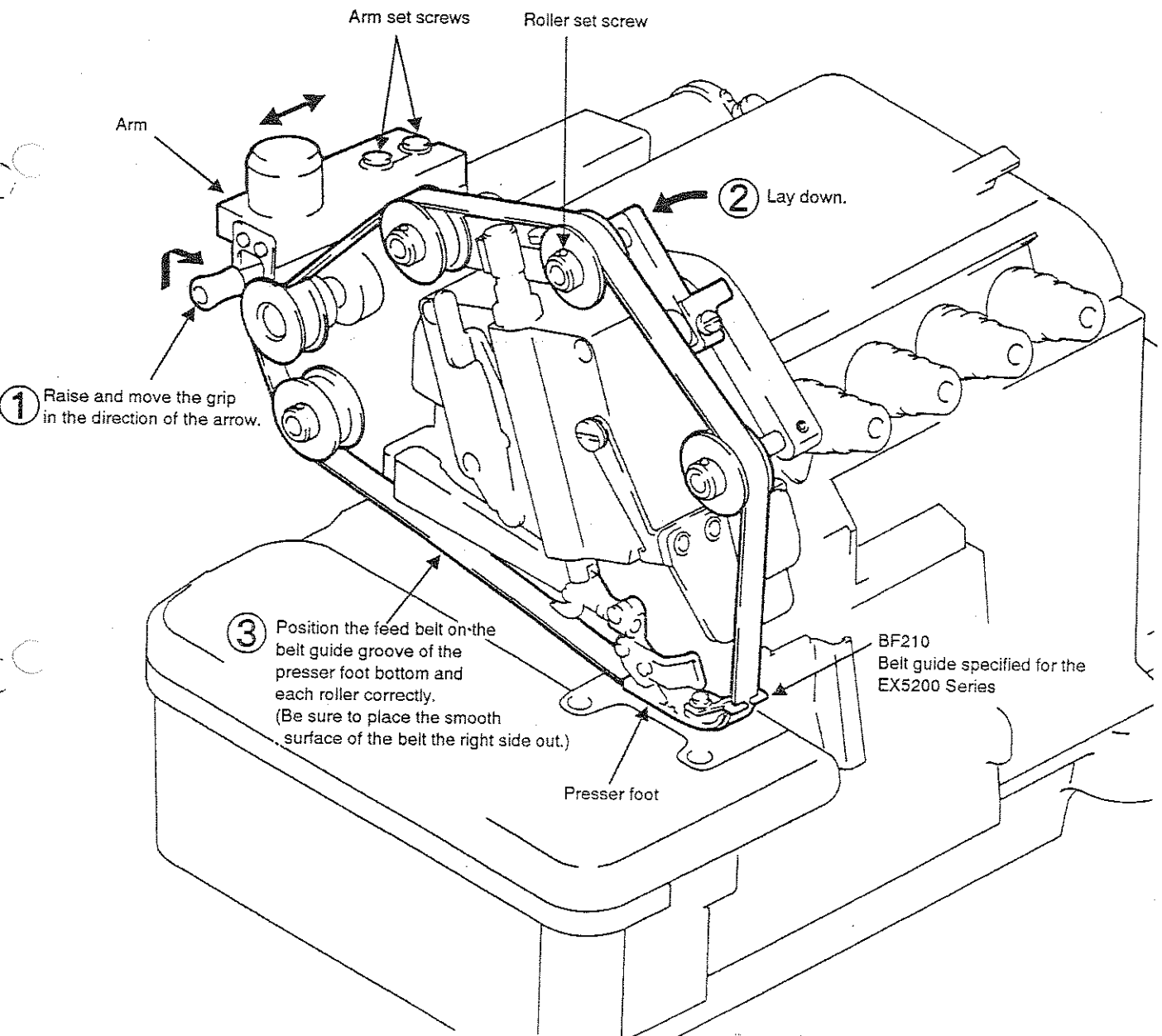
- Install the roller assembly by referring to the following illustration.



Positioning the feed belt

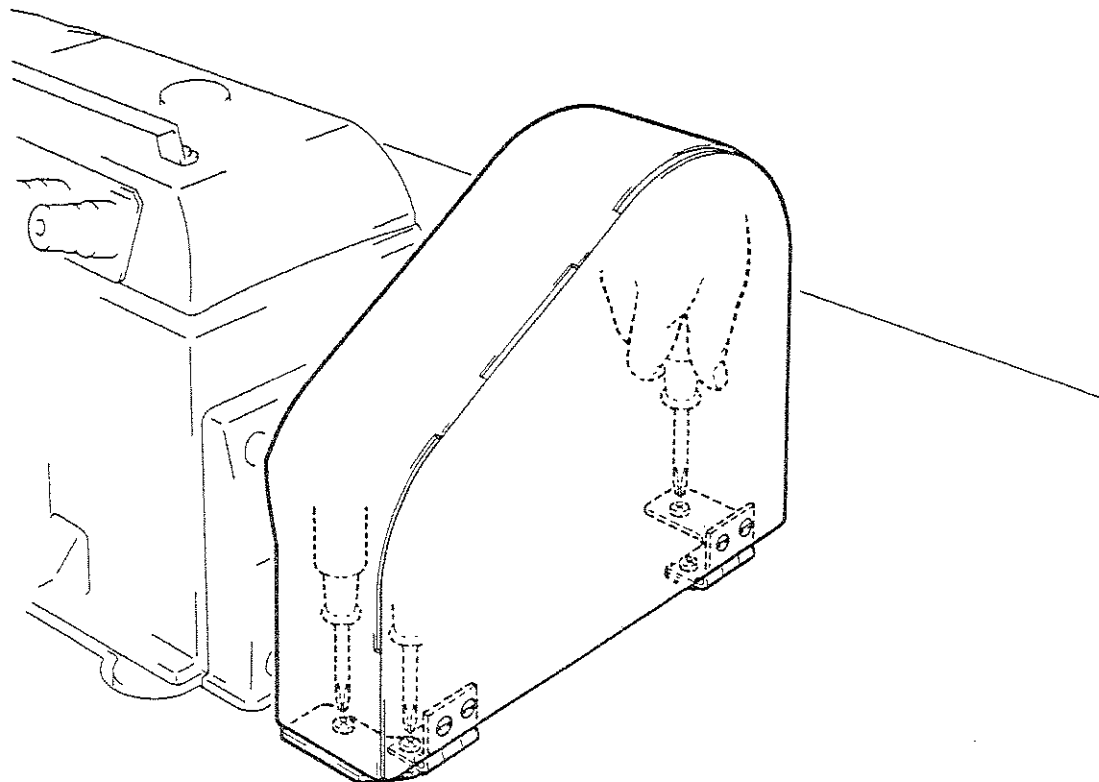
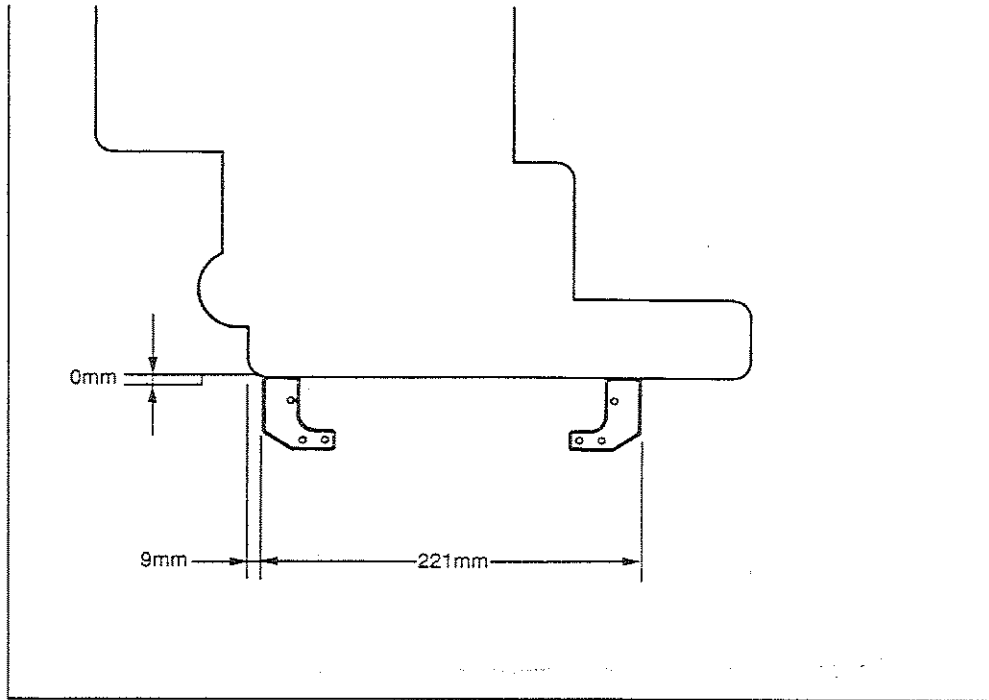
■ Position the feed belt by referring to the following illustration.

Loosen the set screws of each roller and the arm, and adjust the feed belt right or left.



Installing the crank cover

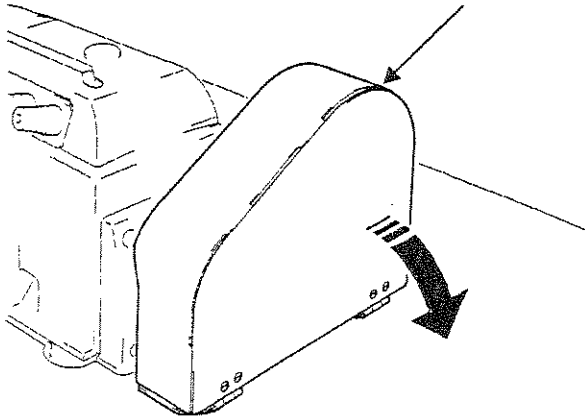
■ See the following illustrations.



Adjusting the belt feed

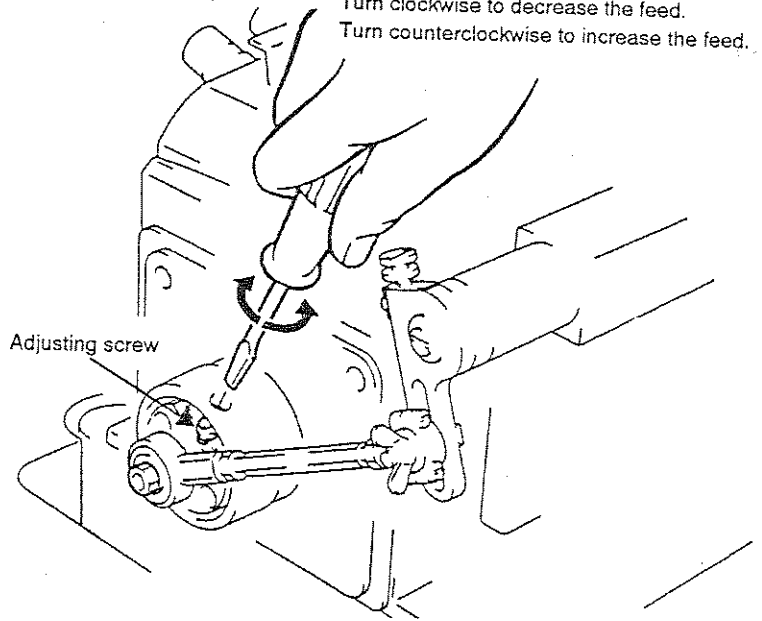
■ Adjust the belt feed by referring to the following illustrations.

Lay the crank cover down.



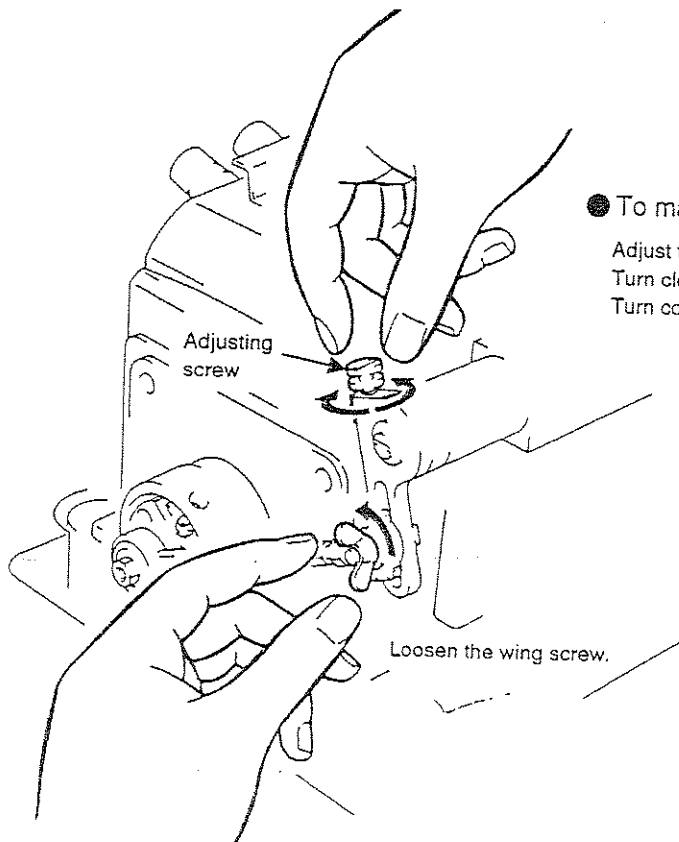
● To make the belt feed adjustment

Turn the adjusting screw.
Turn clockwise to decrease the feed.
Turn counterclockwise to increase the feed.



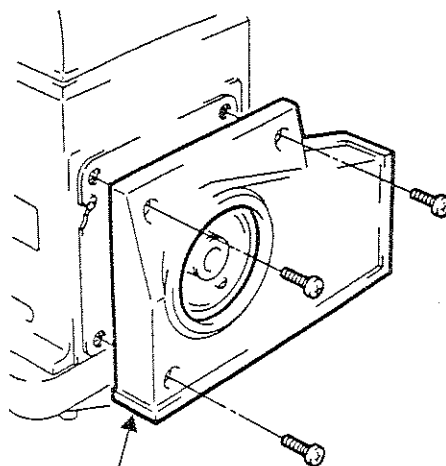
● To make the fine belt feed adjustment

Adjust the feed by turning the adjusting screw.
Turn clockwise to increase the feed.
Turn counterclockwise to decrease the feed.

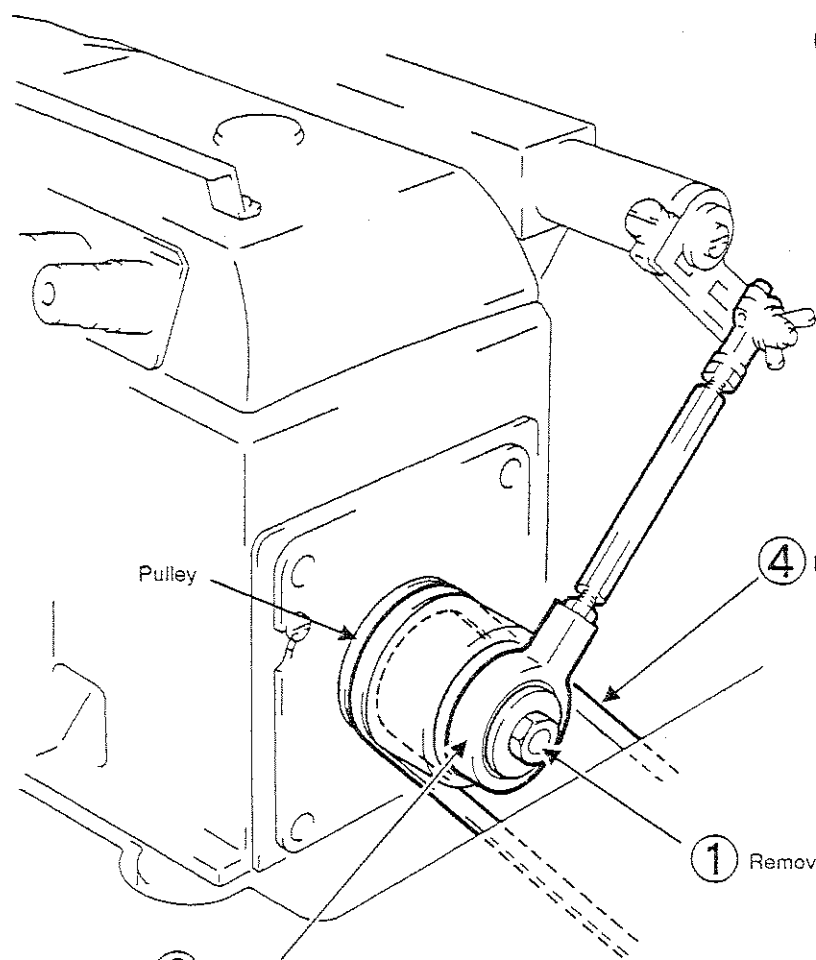


Positioning the V belt

■ See the following illustrations.



③ Remove the belt cover.



Pulley

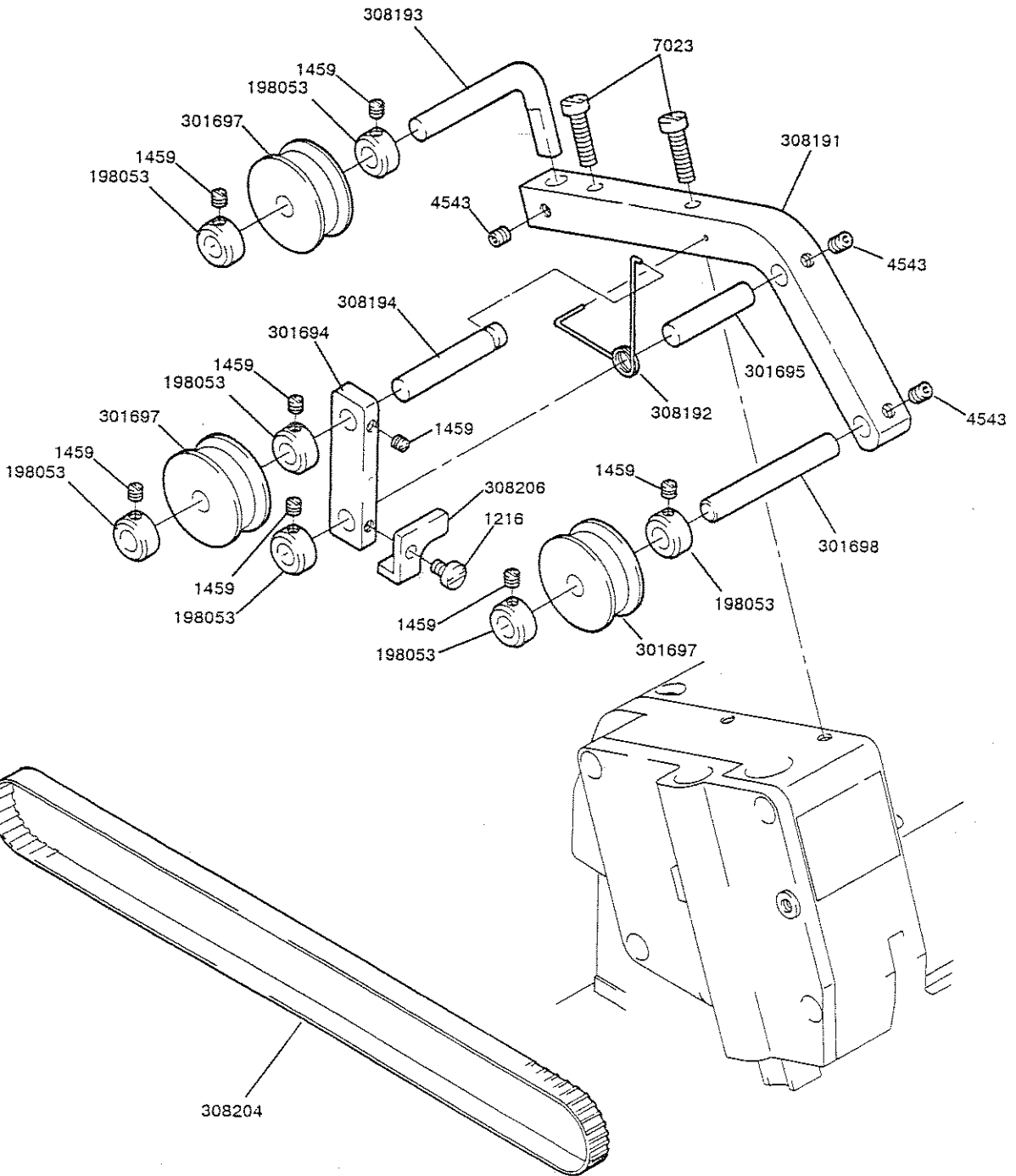
① Remove the nut and washer.

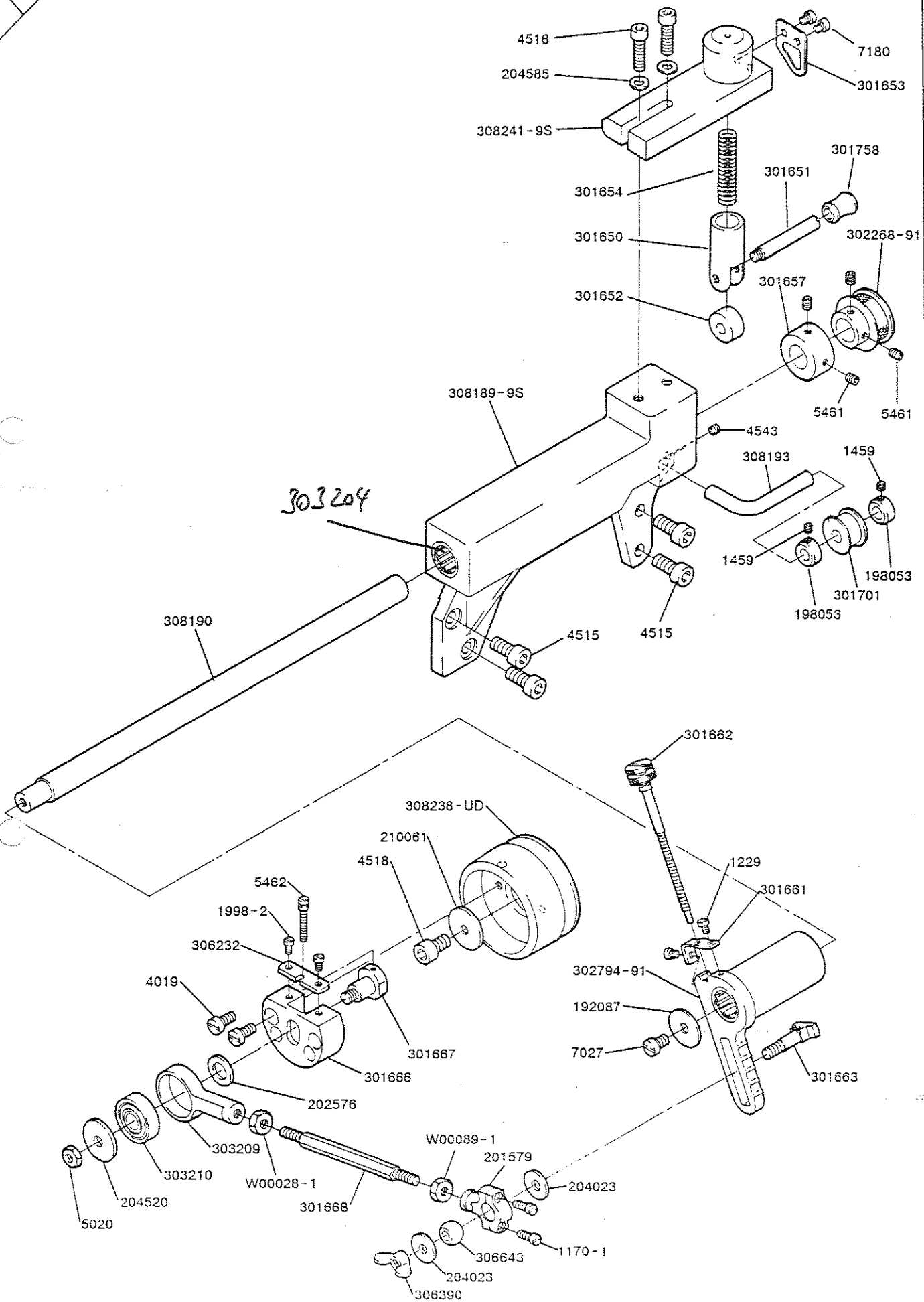
② Remove the rod.

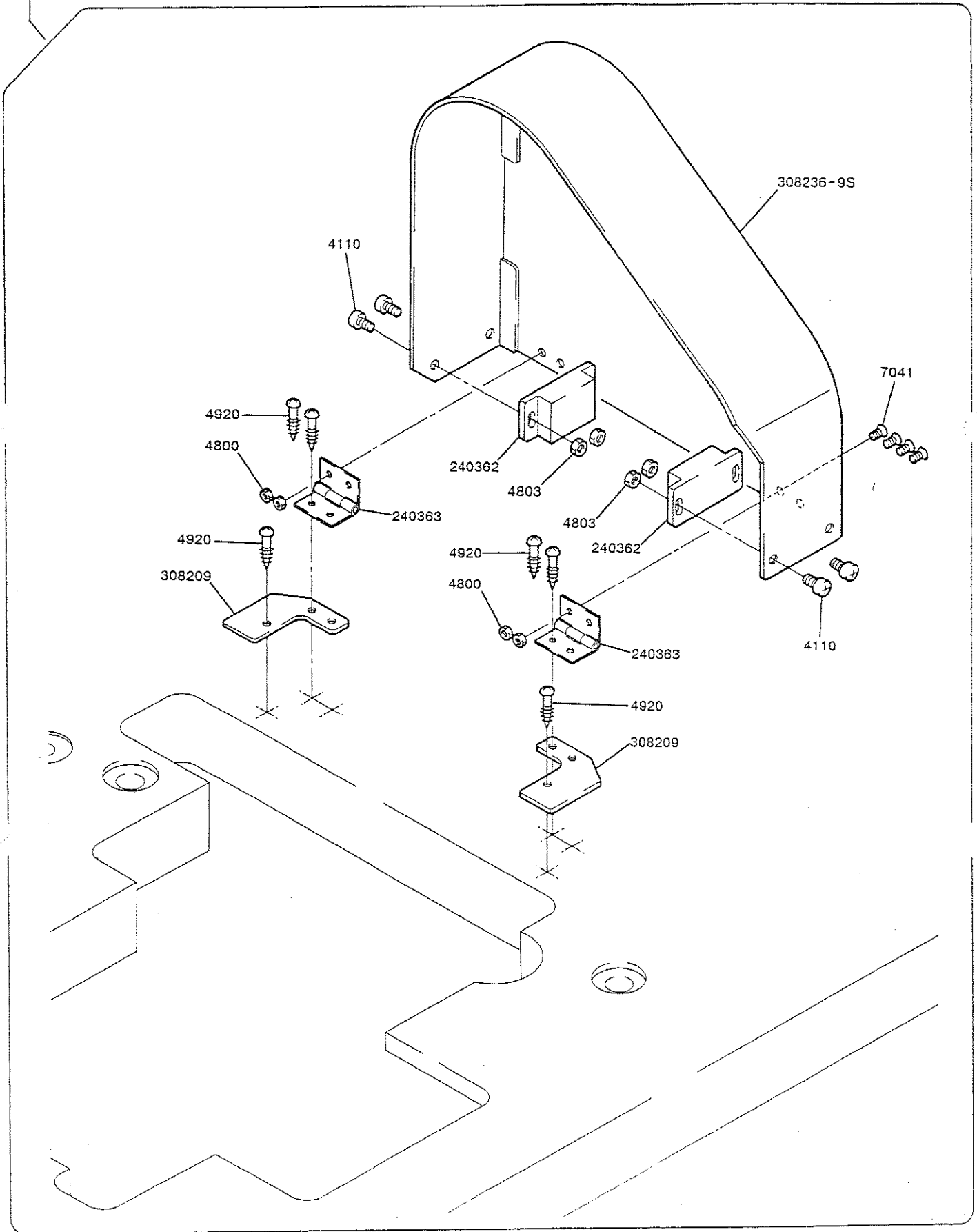
④ Position the V belt on the pulley correctly.

BF-210

308201-91





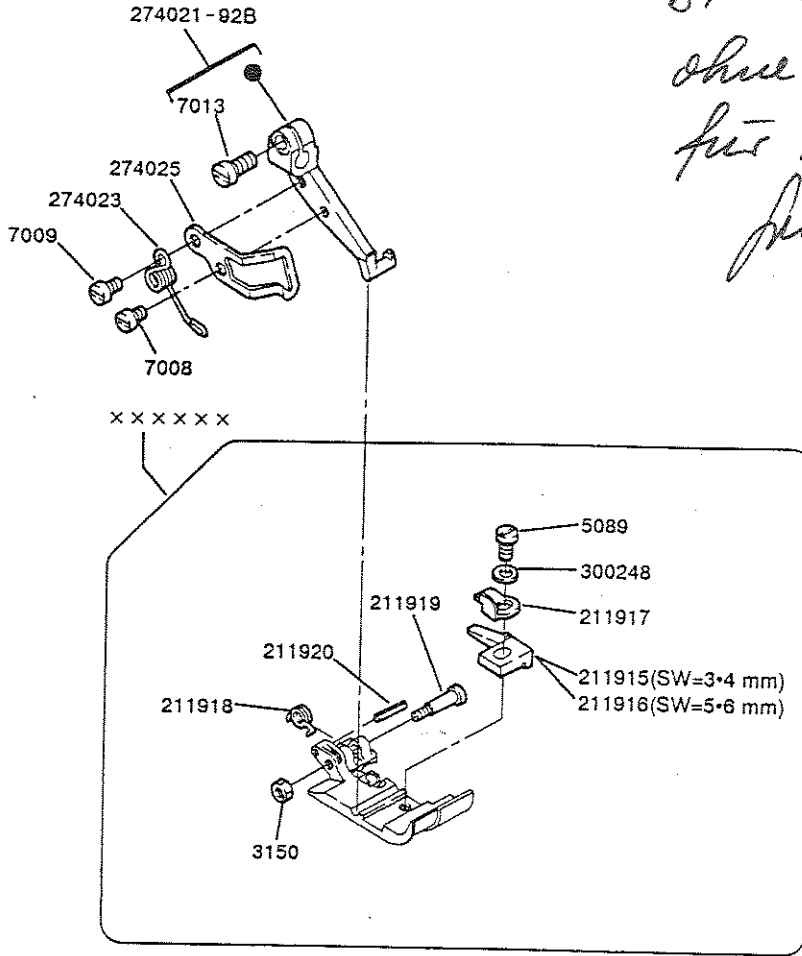


EX3200 Series / BF210

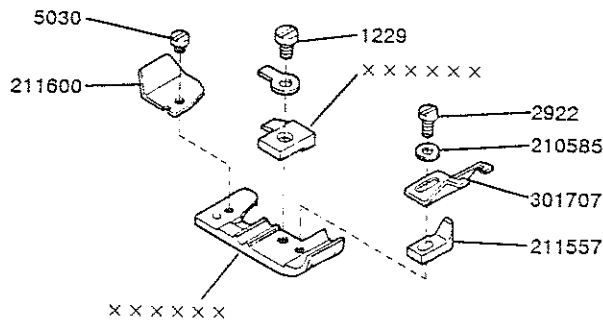
Herrn Puertel

BF-Nähfuß ist ohne Schlitze für Bandführung.

*Bitte U. Zobe
13/12/01*



EX5200 Series / BF210



××××× はゲージパーツです。
 18,19 頁のゲージパーツ表で確認して下さい。
 ××××× indicates gauge parts.
 Please confirm the correct part numbers by the gauge parts lists on pages 18,19.

形式 MACHINE TYPE /SPEC.	ゲージ		針板 NEEDLE PLATE	主送り歯(組) MAIN FEED DOG ASS.	主送り歯本体 MAIN FEED DOG	補助送り歯 AUX. FEED DOG	差動送り歯 DIFF. FEED DOG	押工(組) PRESSER FOOT ASS.	上ルーバー UPPER LOOPER	上スプレッター UPPER SPREADER	下ルーバー LOWER LOOPER	二重繰ルーバー CHAINSTITCH LOOPER
	NG	SW										
EX3216-02/223	3	3	277515R30	277323-16	(277324-16)	(277318-13)	277326-16	301705-TA	277010 # 2	277014A # 8	277015	277018
	4	4	277513R40				277325-16	301732-TA				
	5	5	" 50									

形式 MACHINE TYPE /SPEC.	ゲージ		上メス		下メス LOWER KNIFE	オーバー針受		針留 NEEDLE HOLDER	針留糸道 THREAD GUIDE (NDL.HOLDER)	針 NEEDLE
	NG	SW	平メス FLAT KNIFE	角メス ANGLED KNIFE		前 FRONT	後 REAR			
EX3216-02/223	3	3	201121A		202295	277007	277004	277027-02	275030	DC X 27 # 11
	4	4								
	5	5								

形式 MACHINE TYPE /SPEC.	ゲージ GAUGE		針板 NEEDLE PLATE	主送り歯(組) MAIN FEED DOG ASS.	主送り歯本体 MAIN FEED DOG	補助送り歯 AUX. FEED DOG	差動送り歯 DIFF. FEED DOG	押工 PRESSER FOOT	押エ爪 PRESSER FOOT FINGER	上ルーバー UPPER LOOPER	下ルーバー LOWER LOOPER
	NG	SW									
EX5204-02/233	-	3	277504R30	277303-16F	(277304-16F)	(277318-13)	277305-16F	301704-TA	301710-TA	277010 #2	277015
		4	" 40								
		5	" 50								
		3	277505R30								
		4	" 40								
EX5214-03/333	2	5	" 50	277303-16F	(277304-16F)	(277318-13)	277305-16F	301704-TA	301715-TA	277010A #5	277015
		3	277505R30								
		4	" 40								
EX5214-03C3/333	2	5	" 50	277303-16F	(277304-16F)	(277318-13)	277305-16F	301704-TA	301715-TA	277010A #5	277015
		3	277505R30								

形式 MACHINE TYPE /SPEC.	ゲージ GAUGE		下マス LOWER KNIFE	針受 NEEDLE GUARD		針留 NEEDLE HOLDER	針留糸道 THREAD GUIDE (NDL HOLDER)	針 NEEDLE	
	NG	SW		上マス UPPER KNIFE	前				後
					FRONT				REAR
EX5204-02/233	-	3	201127	-	277005	277004	275019A	DC X 27 # 9	
		4							201121A
		5							202295
		3							277005
		4							201121A
EX5214-03/333	2	5	202295	-	277005	277004	275019B	DC X 27 # 9	
		3							277005
		4							201121A
EX5214-03C3/333	2	5	202295	-	277005	277004	275019B	DC X 27 # 11	
		3							277005